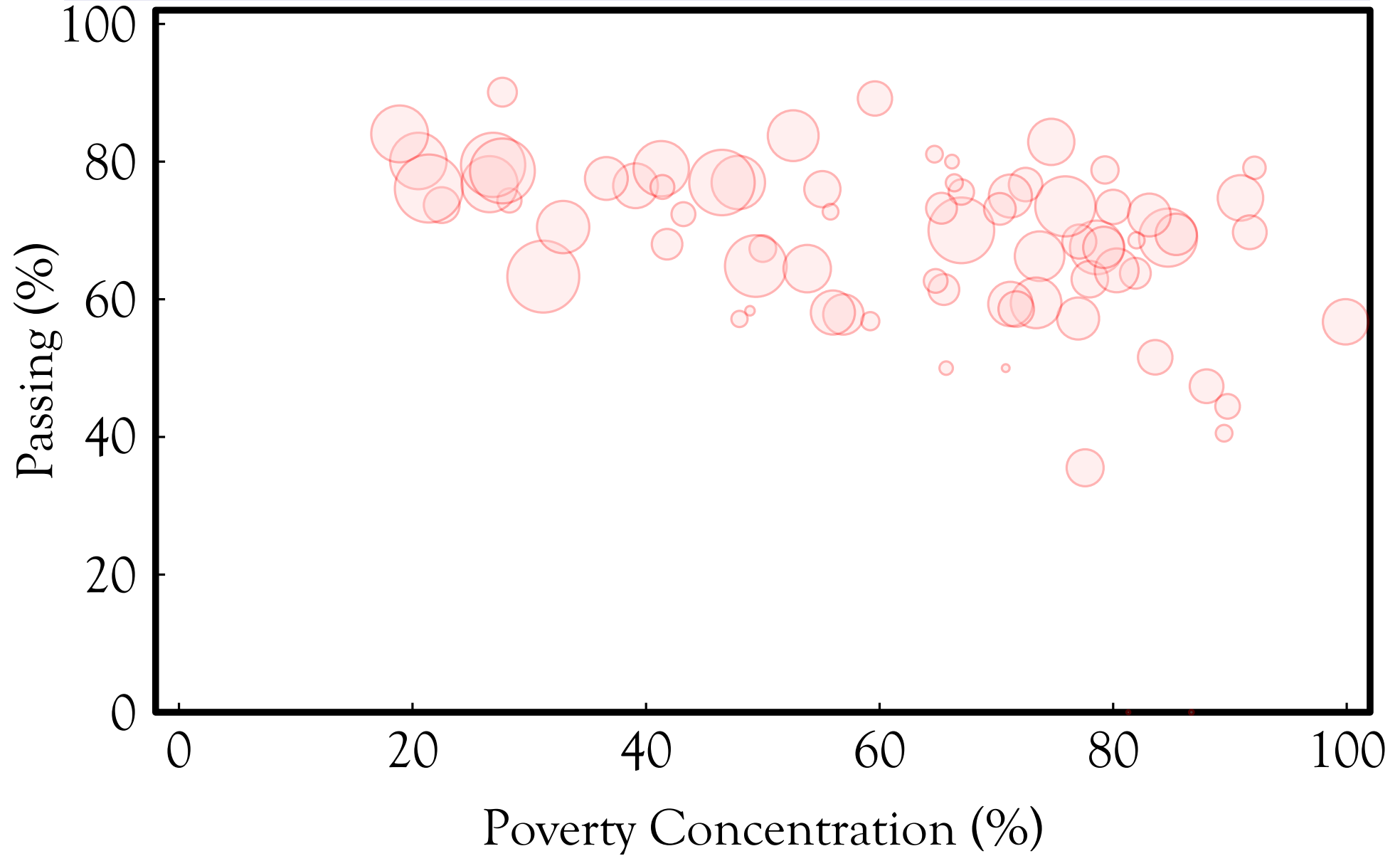


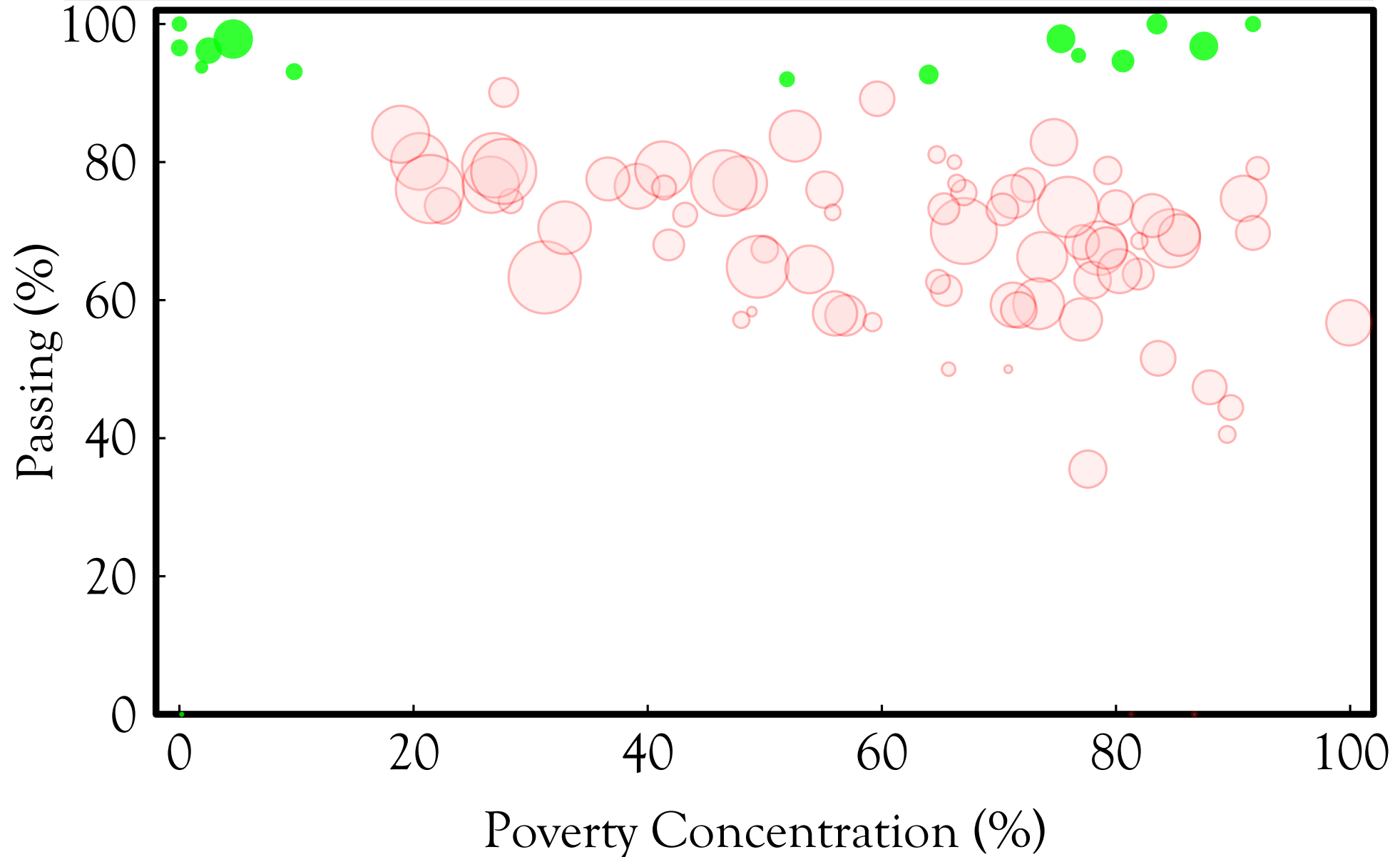
# Texas, Passing 11th Grade Math (2009)



○ Non-Charter: Unacceptable

Taking 11<sup>th</sup> Grade Math  
10 • 100 ● 500 ●

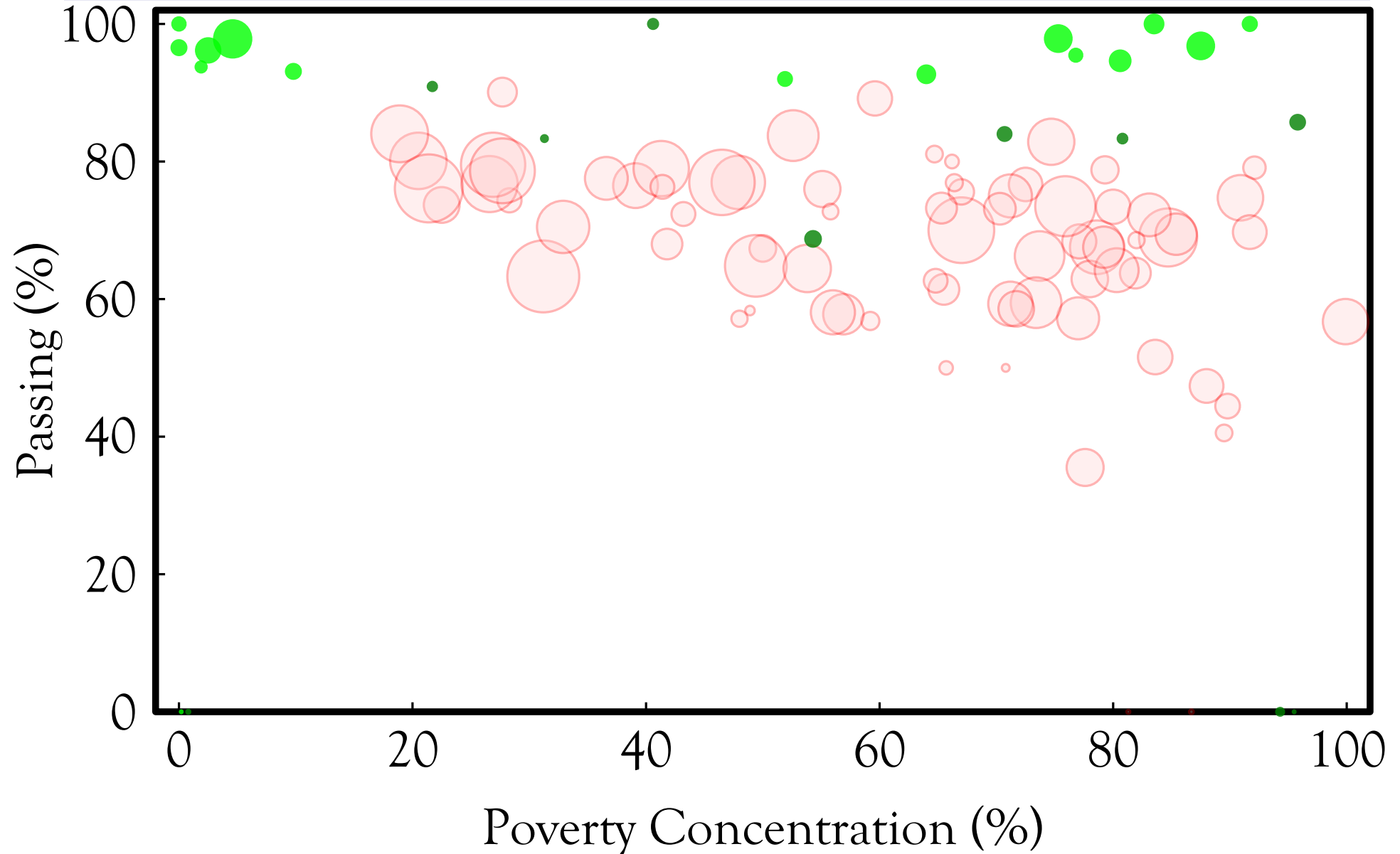
# Texas, Passing 11th Grade Math (2009)



○ Non-Charter: Unacceptable  
● Charter: Exemplary

Taking 11<sup>th</sup> Grade Math  
10 ● 100 ● 500 ●

# Texas, Passing 11th Grade Math (2009)

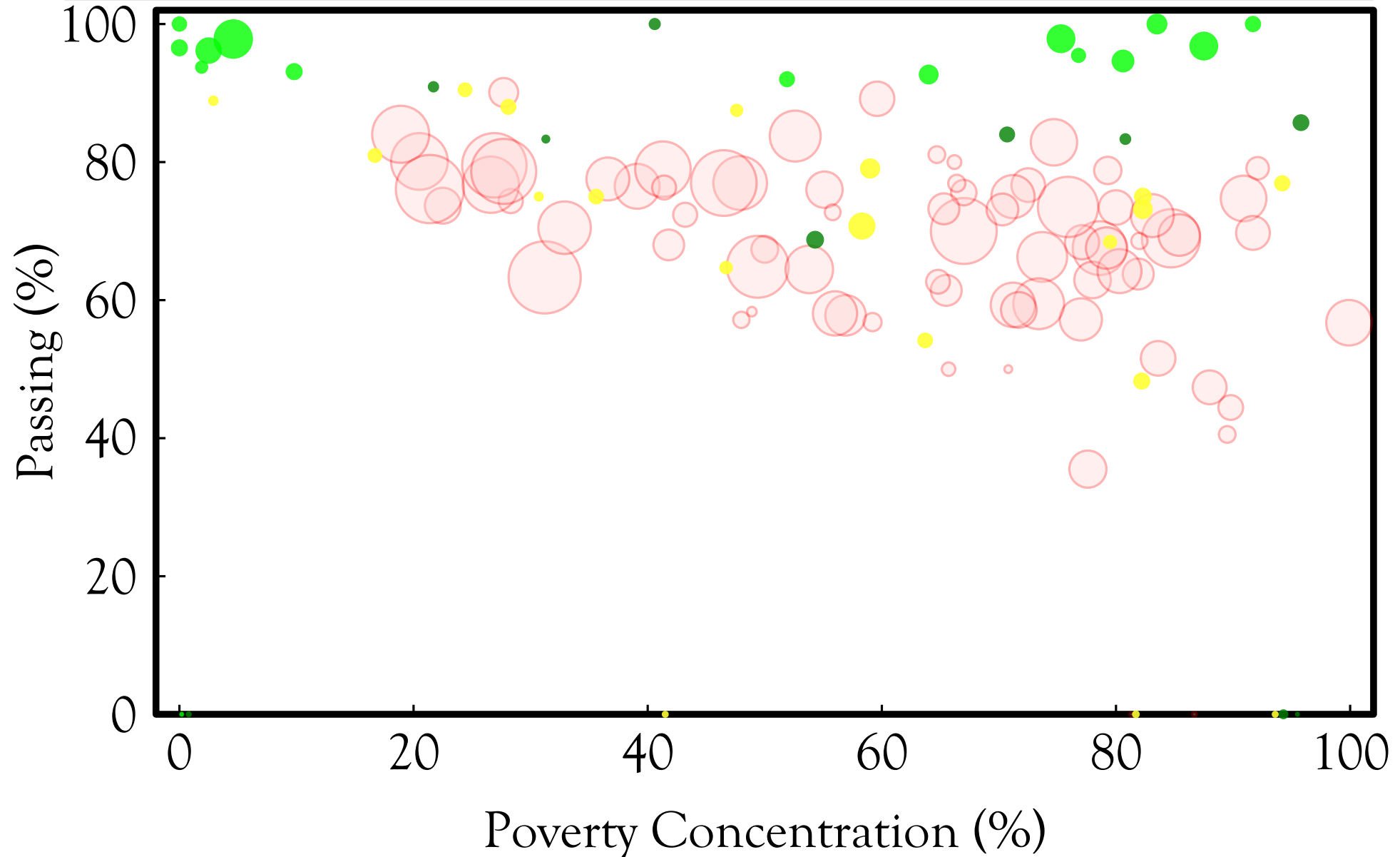


- Non-Charter: Unacceptable
- Charter: Exemplary
- Charter: Recognized

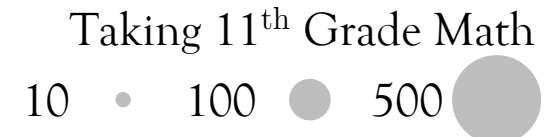
Taking 11<sup>th</sup> Grade Math

10 ● 100 ● 500 ●

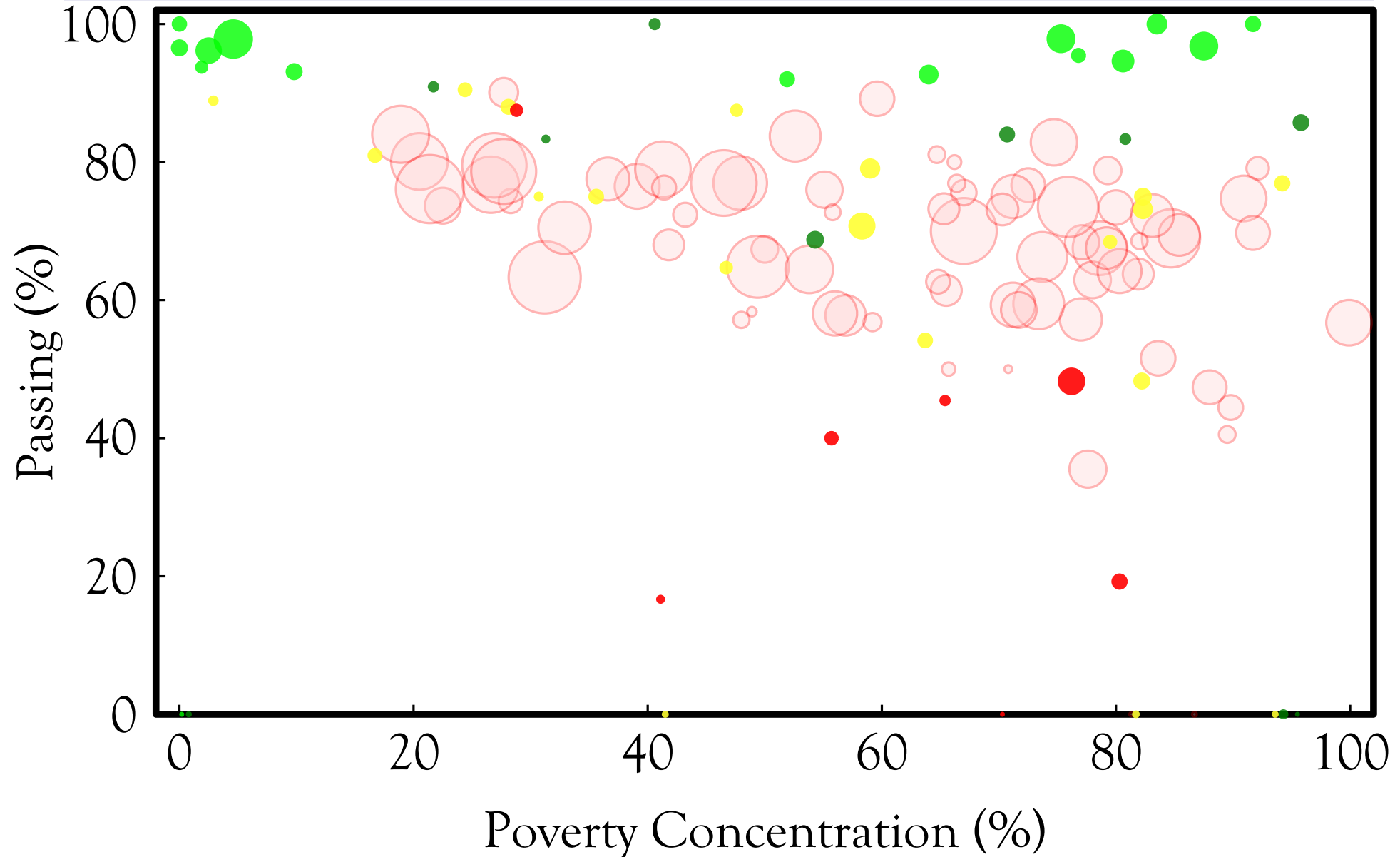
# Texas, Passing 11th Grade Math (2009)



- Non-Charter: Unacceptable
- Charter: Exemplary
- Charter: Recognized
- Charter: Acceptable

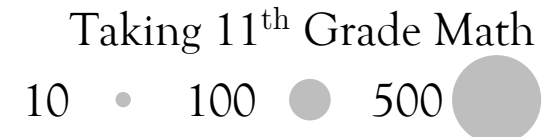


# Texas, Passing 11th Grade Math (2009)

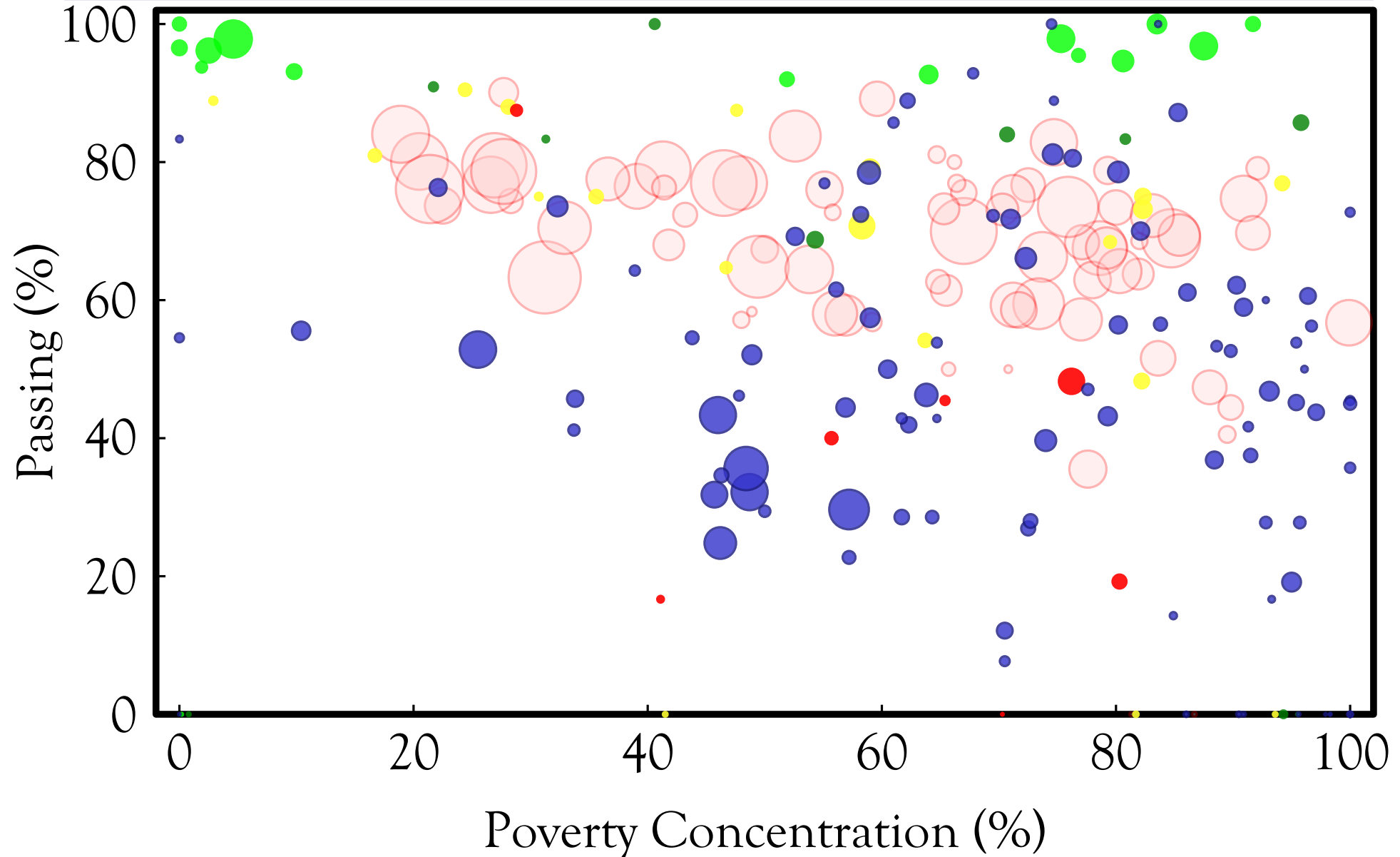


- Non-Charter: Unacceptable
- Charter: Exemplary
- Charter: Recognized
- Charter: Acceptable

- Charter: Unacceptable



# Texas, Passing 11th Grade Math (2009)

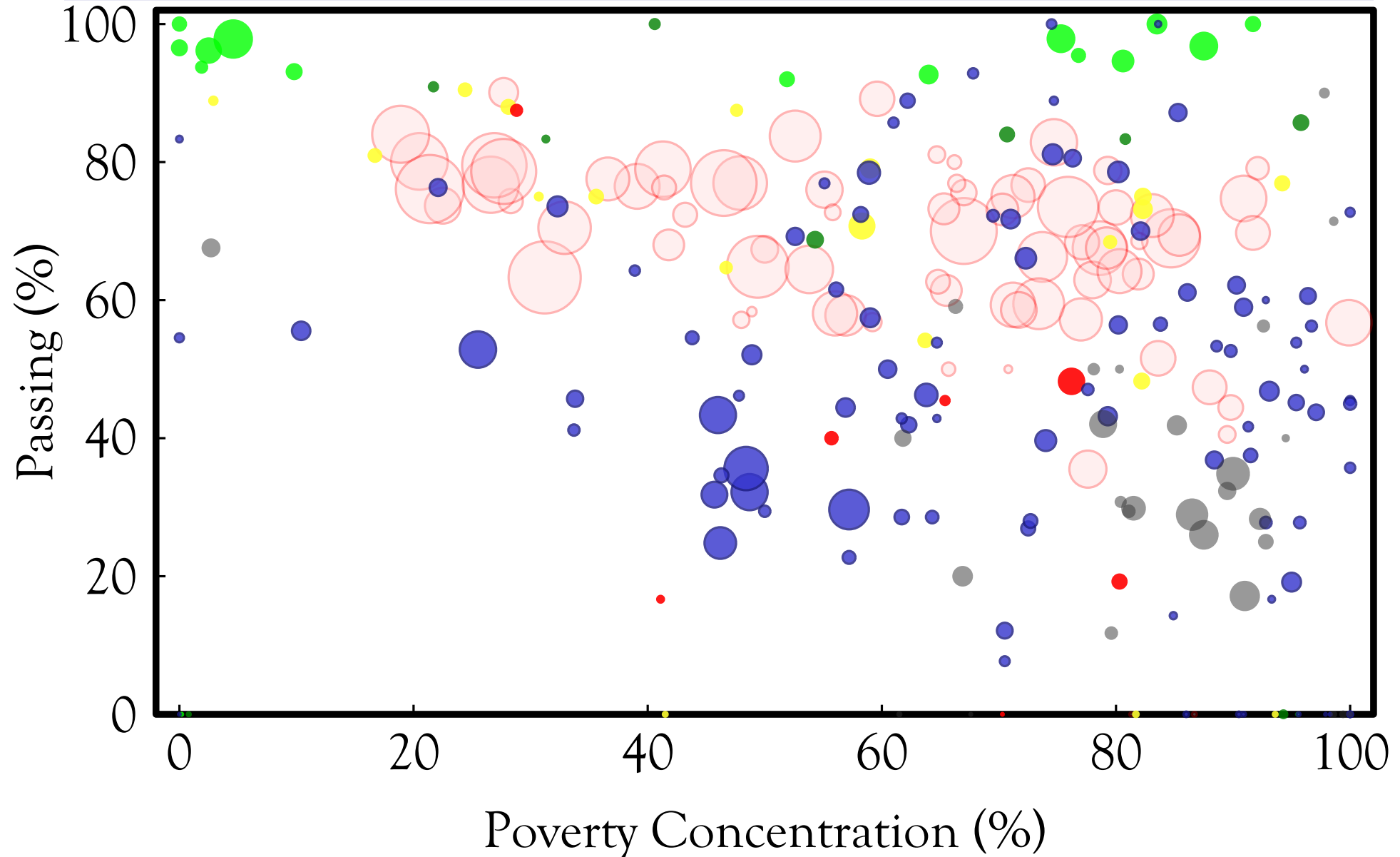


- Non-Charter: Unacceptable
- Charter: Exemplary
- Charter: Recognized
- Charter: Acceptable

- Charter: Unacceptable
- Charter: AEA Acceptable

Taking 11<sup>th</sup> Grade Math  
10 • 100 • 500 • 1000

# Texas, Passing 11th Grade Math (2009)



- Non-Charter: Unacceptable
- Charter: Exemplary
- Charter: Recognized
- Charter: Acceptable

- Charter: Unacceptable
- Charter: AEA Acceptable
- Charter: AEA Unacceptable

- Taking 11<sup>th</sup> Grade Math
- 10
  - 100
  - 500